

SERVICE



LETTER

Service Letter No. 411

October 17, 1963

TO: Distributors, Dealers, Certified Service Centers and Owners

SUBJECT: Drain Holes in PA-30 Cowling

MODELS AFFECTED: PA-30 Twin Comanches, Serials 30-1 to 30-85 inclusive

Reports from the field have indicated that accumulation of moisture is possible in the fiberglass nose cone, the bottom engine cowls and the air filter boxes of the PA-30.

Drain holes have been incorporated in present production aircraft to eliminate accumulation of moisture in these areas.

The subject aircraft indicated by the above serial numbers should have drain holes incorporated according to the description below and the sketches attached to this letter.

1. Add a .125 drain hole at Station 11.125 and B.L.O. in bottom of fiberglass nose cone, part number 23755-00.
2. Add two .125 drain holes in bottom of each engine bottom cowl, part number 23867-05, right, and part number 23867-06, left, at Stations 32.25 and 33.687, 8-3/4" inboard from the cowl centerline.
3. Add a .125 drain hole in each air filter box assembly, part number 23883-00, per sketch attached to this letter.

NOTE

Be sure aluminum chips that result from drilling are completely removed from the air filter boxes.

Very truly yours,

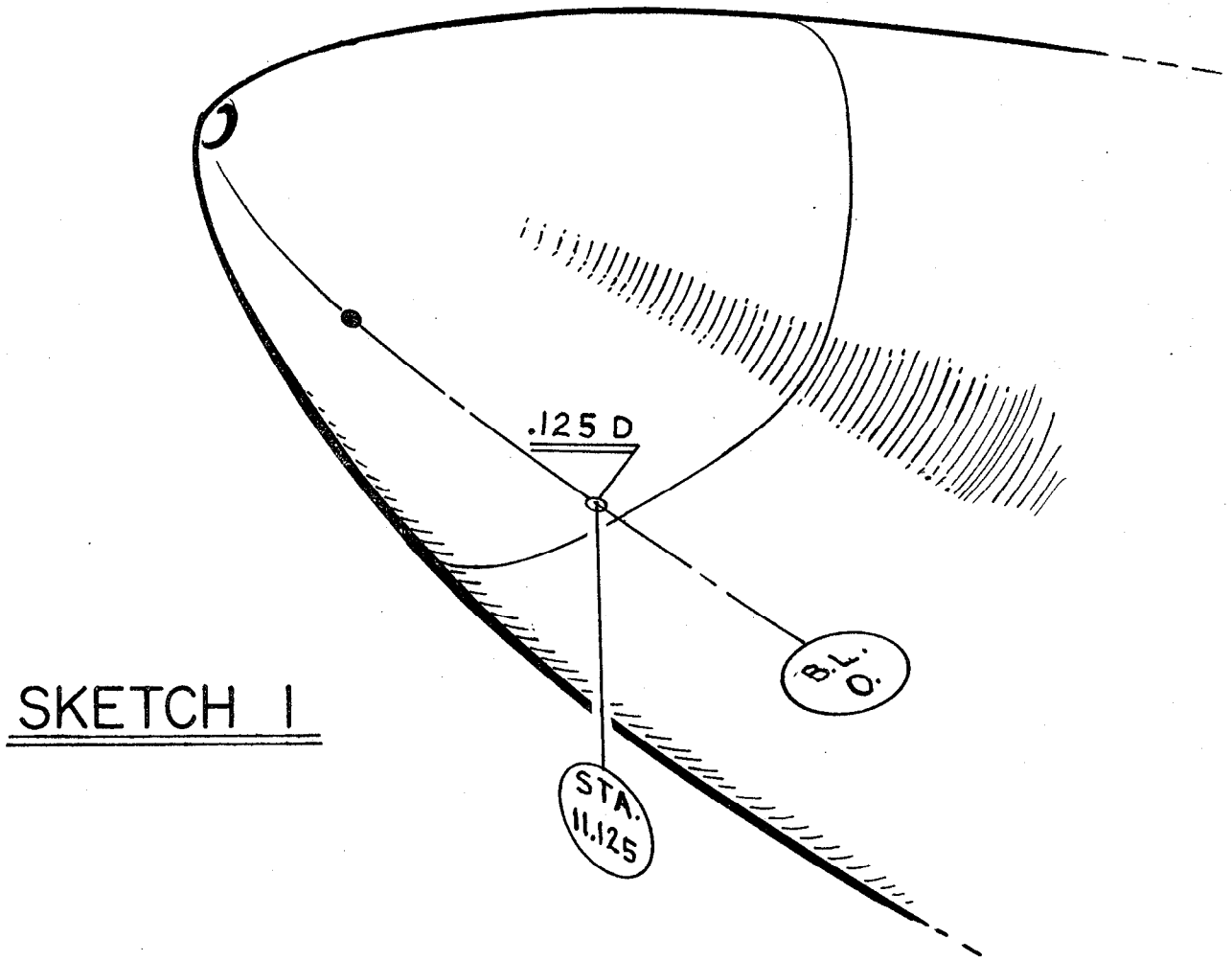
PIPER AIRCRAFT CORPORATION

A handwritten signature in cursive script that reads "Wes Holmes".
Wes Holmes
Service Manager

WH:dld

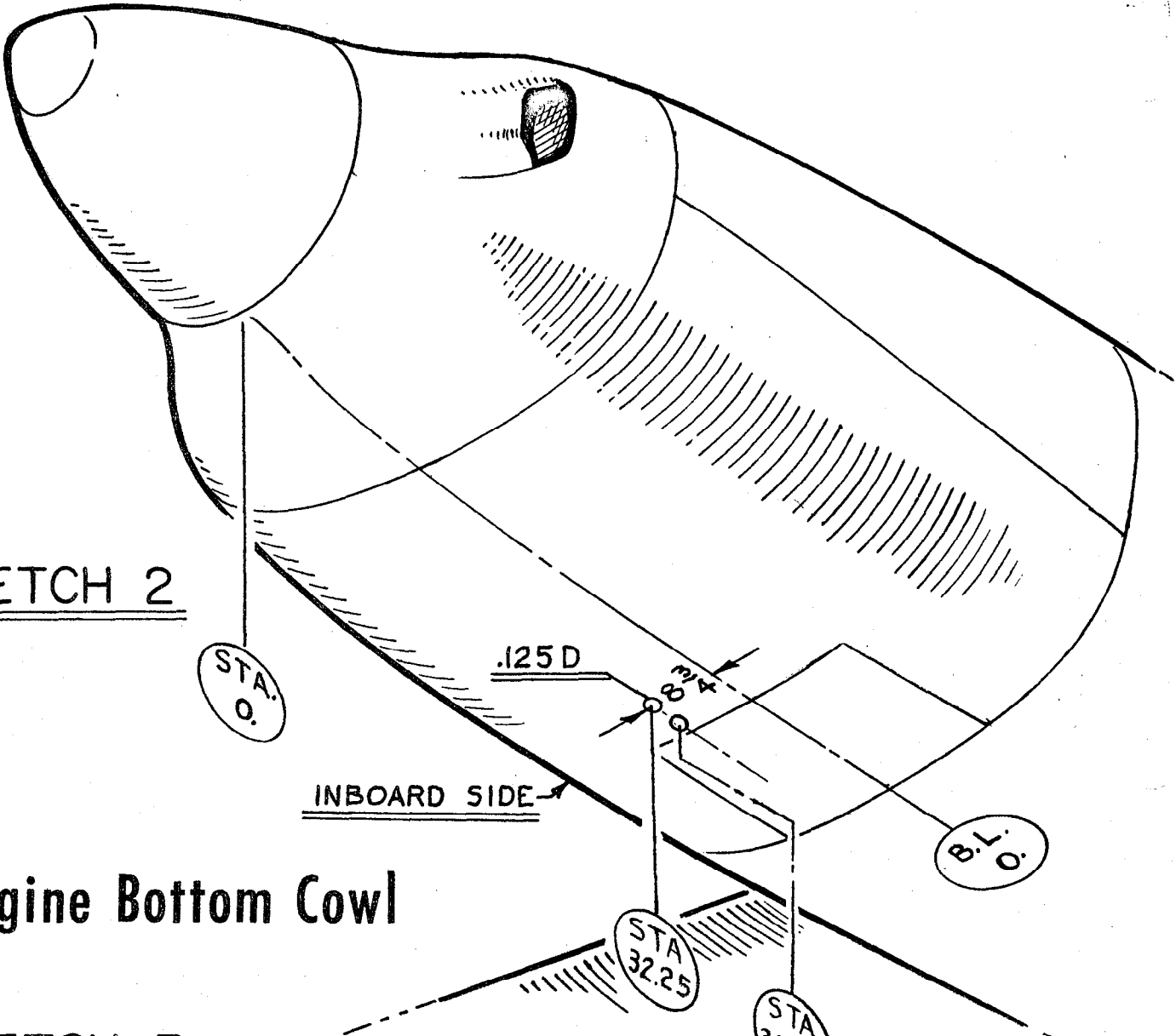
PIPER AIRCRAFT CORPORATION, LOCK HAVEN, PA., U. S. A.

SERVICE LETTER 411



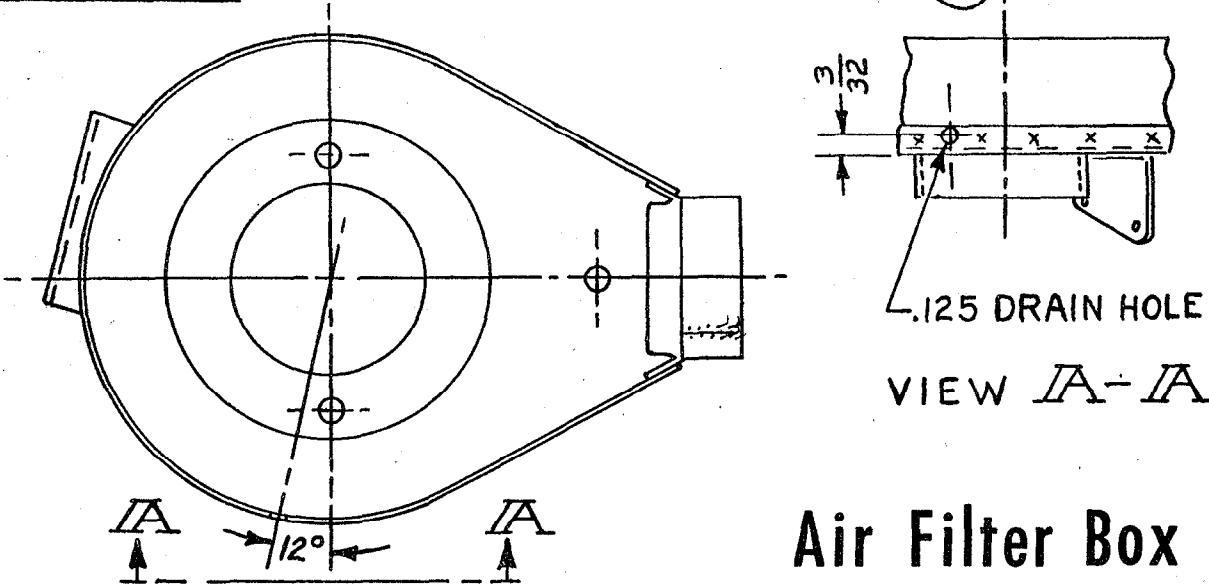
Fuselage Nose Cone

SERVICE LETTER 411



Engine Bottom Cowl

SKETCH 3



Air Filter Box